

Contacts

**The RWBC is funded by UCSD's Superfund Basic Research Program
(National Institute of Environmental Health Sciences (NIEHS)) and Urban Studies and Planning Program.*

The Regional Workbench Consortium

University of California, San Diego
Urban Studies and Planning Program, 0517
9500 Gilman Drive
La Jolla, CA 92093-0517
phone: (858) 534-3691 o fax: (858) 534-1691
e-mail: kpezzoli@ucsd.edu
<http://regionalworkbench.org>

RWBC PARTNERS:

UCSD

- Superfund Basic Research Program
 - Urban Studies and Planning Program
- Departments of Economics, & Communications
- San Diego Supercomputer Center
 - Center for U.S.-Mexican Studies
 - Scripps Institution of Oceanography
 - Cal-(IT)2
 - Social Sciences and Humanities Library

SDSU

- Graduate Program in City Planning, School of Public Administration and Urban Studies
 - Department of Geological Sciences
- Education Center on Computational Science & Engineering

Mexico

- COLEF (El Colegio de la Frontera Norte)
- CICESE (Centro de Investigación Científica y de Educación Superior de Ensenada)

Non-profit organizations

- TELESIS

San Diego Baykeeper and the Ja Jan Coalition
San Diego River Park Foundation
International Community Foundation
San Diego Regional Economic Development Corp.

Other partners include industry associations and government agencies, for a complete list see <http://www.regionalworkbench.org/partners.php>

RWBC

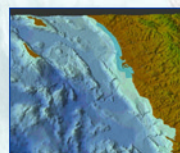
REGIONAL WORKBENCH CONSORTIUM



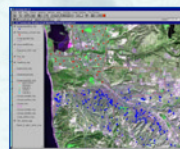
A Federated Research and Learning Network for Sustainable Development



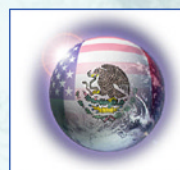
Promoting Sustainability Science:
A Workbench Approach



3D Model Building & Visualization
In Support of Watershed Management,
Planning and Education



Tools for Federating
Spatial Data On Toxics



Promoting Collaboration
In the U.S.-Mexico Border Region



Community-Based Planning Programs:
Colonia 10 De Mayo



Improving the Pedagogy of Urban Studies
and Planning - Senior Sequence UCSD

Regional Workbench Consortium Mission:

Create innovative research-learning collaboratives, planning support systems, and integrated educational tools to enable sustainable city-region development

The Regional Workbench Consortium (RWBC) is a collaborative network of university, government, industry, and community-based partners. We are developing new tools for regional information integration and sharing--including on-line GIS, scientific visualization, multimedia narratives linked to knowledge maps, collaborative groupware, and quality of life indicators. The RWBC's applied projects are intended to serve as test beds (case studies) for innovative research applications, social learning, internship opportunities, pedagogy and workforce development. Our main geographic focus (taking into account the dynamic interplay of local-global forces), is the U.S.-Mexico border region with a special emphasis on the San Diego-Tijuana city-region and the Southern California-Northern Baja California coastal zone.

Seven fundamental precepts guiding the RWBC:

Place-based, scalable	· Facilitate multidisciplinary place-based research in a scalable context (i.e., a conceptual space that inter-relates local, regional and global dynamics).
Integrative, multidisciplinary	· Link the “new regionalism” with sustainability science, information and communications technologies, and ethics · Create methods for integrating physical, biological and socioeconomic data (e.g., planning and decision-support systems, GIS + scientific visualization).
Normative	· Promote the three E's of sustainable development (equity, environmental stewardship, and economic efficiency in a whole-systems approach).
Problem-driven, action oriented	· Pursue a core set of pressing problems (projects) that inspire the linkage of knowledge to action at the regional scale.
Collaborative and multicultural	· Foster relationships and networks driving the shift from “planning for the public” to “planning with the public.” · Serve as a culturally sensitive platform for education, outreach and training.
Historical and Forward-looking	· Seek historically-informed views of alternative futures (i.e., actionable “Vision” based on critical understanding and current knowledge of relevant literature).
Accessible, user-friendly, network extensible	· Build capacity for data and information sharing (based on principles of distributed intelligence and federation). · Create story-based narratives and multi-media presentations that offer meaningful views of the RWBC's projects (tailored to distinct audiences including researchers, public agencies, community groups, and students).

RWBC Agenda:

- Establish a new mode of communication among university, industry, government and community-based organizations seeking sustainable city-region development (i.e., integrated approaches to meeting social equity, economic, and environmental objectives);
- Provide a testbed for developing/applying/evaluating advanced information, visualization, and communications technologies in the context of partnership-driven research projects and knowledge-action collaboratives;
- Create interactive and participatory methods for social learning about sustainable development in the San Diego-Tijuana city-region and beyond (targeting regional planning and policy);
- Promote excellence in undergraduate/graduate research education by creating “knowledge maps” (ontologies) and interactive tools for conceptualizing, designing, conducting, and sharing field studies;
- Inspire/facilitate research requiring the integration of disciplines and spatial scales (drawing from the social, natural, and physical sciences as well as technology, art and the humanities).