

Contacts

The Regional Workbench Consortium
University of California, San Diego
Urban Studies and Planning Program, 0517
9500 Gilman Drive
La Jolla, CA 92093-0517
phone: (858) 822-5254 • fax: (858) 534-1691
<http://www.regionalworkbench.org>

Keith Pezzoli, Ph.D.
University of California, San Diego
Urban Studies and Planning Program, 0517
9500 Gilman Drive
La Jolla, CA 92093-0517
phone: (858) 534-3691 • fax: (858) 534-1691
e-mail: kpezzoli@ucsd.edu

For a complete list of contacts please visit:
<http://www.regionalworkbench.org/html/contacts.html>

RWBC PARTNERS:

UCSD

- Superfund Basic Research Program
- Urban Studies and Planning Program
 - Civic Collaborative
 - San Diego Supercomputer Center
(Knowledge-based Integration Lab, Spatial Information Laboratory)
 - Center for U.S.-Mexican Studies
- Center for Comparative Immigration Studies
- Scripps Institution of Oceanography
(Geological Data Center, Institute of Geophysics and Planetary Physics)
 - Cal-(IT)2

SDSU

- Graduate Program in City Planning, School of Public Administration and Urban Studies
 - Departments of Geological Sciences, and Geography
- Southwest Center for Environmental Research and Policy (SCERP)

Mexico

- COLEF (El Colegio de la Frontera Norte)
- CICESE (Centro de Investigación Científica y de Educación Superior de Ensenada/ Center for Scientific Investigation and Graduate Education, Ensenada)
 - UABC (Universidad Autónoma de Baja California)

Non-profit organizations

- TELESIS
- Planeficacion, A.C.

The Regional Workbench Consortium is funded by the
UCSD SBRP and the UCSD Urban Studies and Planning Program

RWBC

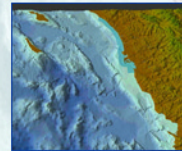


REGIONAL WORKBENCH CONSORTIUM

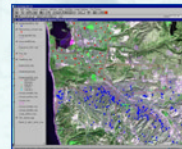
A Federated Research and Learning Network for Sustainable Development



Promoting Sustainability Science:
A Workbench Approach



3D Model Building & Visualization
In Support of Watershed Management,
Planning and Education



Tools for Federating
Spatial Data On Toxics



Promoting Collaboration
In the U.S.-Mexico Border Region



Community-Based Planning Programs:
Colonia 10 De Mayo



Improving the Pedagogy of Urban Studies
and Planning - Senior Sequence UCSD

Regional Workbench Consortium Mission:

The Regional Workbench Consortium (RWBC) is a collaborative network of university and community-based partners. Our mission is to inspire and support research, education, and outreach aimed at integrating the 3E's of sustainable development: social equity, environmental stewardship, and economic efficiency. We have a twofold approach. First, we aim to improve our collective capacity to investigate and understand interlocking problems of environment and development. To do this, we are developing new tools for knowledge-based information integration and sharing--including GIS, scientific visualization, multimedia narratives linked to knowledge maps, collaborative groupware, and quality of life indicators. Second, we aim to strengthen the role that science, technology, art, and social empowerment can play in improving regional quality of life. To do this, we are conducting a set of applied research projects involving water quality, toxics, environmental health, affordable housing, community-based planning, land use and infrastructure. The RWBC's applied projects are intended to serve as test beds (case studies) for innovation, social learning, and pedagogy. Our main geographic focus (taking into account the dynamic interplay of local-global forces), is the U.S.-Mexico border region with a special emphasis on the San Diego-Tijuana city-region and the Southern California-Northern Baja California coastal zone.

Online Resources:

Regional Workbench Web site:
<http://regionalworkbench.org/>

SBRP Outreach Core:
<http://superfund.ucsd.edu/outreach.html>

UCSD Urban Studies and Planning:
<http://usp.ucsd.edu>

TELESIS Corporation, Quality of Life (QOL) Project
<http://www.qolsandiego.net/index.html>

Center for US/Mexican Studies
<http://www.usmex.ucsd.edu>

SDSU Visualization Lab
<http://www.geology.sdsu.edu/facilities/vislab/index.html>

San Diego Supercomputer Center
<http://www.sdsc.edu>

SIO Visualization Center
<http://siovizcenter.ucsd.edu/>

Civic Collaborative, UCSD
<http://www.ucsd-civic-collaborative.org/>

CICESE Earth Sciences Division
<http://geologia.cicese.mx/>

COLEF Department of Urban and Environmental Studies
<http://200.23.245.225/alwebaplicaciones/main.html>

Seven fundamental precepts guiding the RWBC:

Place-based, scalable	· Facilitate multidisciplinary place-based research in a scalable context (i.e., a conceptual space that inter-relates local, regional and global dynamics).
Integrative, multidisciplinary	· Link the “new regionalism” with sustainability science, information and communications technologies, and ethics · Create methods for integrating physical, biological and socioeconomic data (e.g, planning and decision-support systems, GIS + scientific visualization).
Normative	· Promote the three E's of sustainable development (equity, environmental stewardship, and economic efficiency in a whole-systems approach).
Problem-driven, action oriented	· Pursue a core set of pressing problems (projects) that inspire the linkage of knowledge to action at the regional scale.
Collaborative and multicultural	· Foster relationships and networks driving the shift from “planning for the public” to “planning with the public.” · Serve as a culturally sensitive platform for education, outreach and training.
Historical and Forward-looking	· Seek historically-informed views of alternative futures (i.e., actionable “Vision” based on critical understanding and current knowledge of relevant literature).
Accessible, user-friendly, network extensible	· Build capacity for data and information sharing (based on principles of distributed intelligence and federation). · Create story-based narratives and multi-media presentations that offer meaningful views of the RWBC's projects (tailored to distinct audiences including researchers, public agencies, community groups, and students).