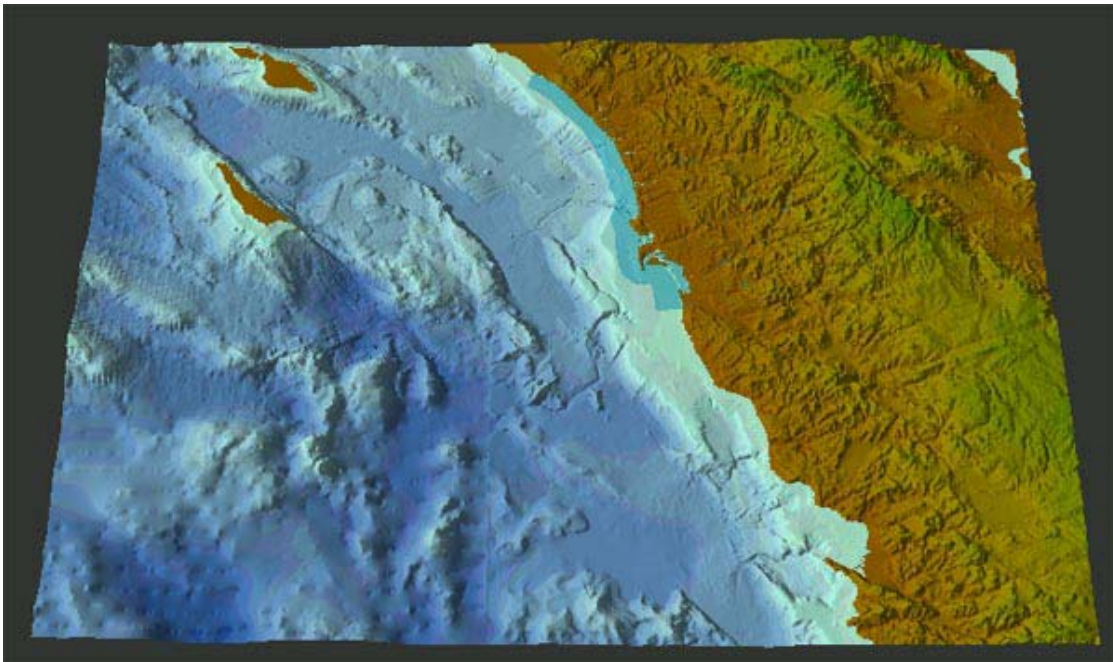


UCSD's Superfund Basic Research Program to Host Regional Workbench Consortium Expo on May 29

The UCSD-based Regional Workbench Consortium ([RWBC](#)) will hold its first Regional Expo on May 29, 2003, at the Institute of the Americas complex on the campus of UC San Diego. The RWBC is led by the [Outreach Core](#) of UCSD's Superfund Basic Research Program.

Participation in the Expo is open to the public, but space is limited to 160 participants, and [registration](#), with confirmation, is required. Directions, including parking instructions, are on the RWBC site.

Before the Expo, UCSD-TV will air a documentary on the RWBC beginning May 19, 2003. More information is available [here](#).



Initial version of the RWBC's 3-D "Integrated Regional Canvas," with San Diego just above the middle. Based on data contributed from multiple collaborators, the image provides an accurate physical model of the crossborder region and coastal zone, including both land topography and ocean bathymetry. Image by Dru Clark, SIO Geological Data Center, in collaboration with RWBC partners from U.S. and Mexico.

The RWBC is a collaborative network of university and community-based partners dedicated to enabling sustainable city-region development. The project is building a trusted Internet-based workbench to facilitate research, outreach, and education that require region-wide data integration and information sharing. This partnership-driven approach integrates issues of equity, environmental stewardship, and economic efficiency.

"Today's complex regional problems are multi-dimensional, and present intertwined social, economic, environmental and other challenges," said consortium co-organizer Keith Pezzoli. "By bringing together partners that span the region, the RWBC is building a solid base from which to address these problems in a comprehensive way." Pezzoli is the co-director of the Outreach Core of UCSD's Superfund Basic Research Program and a faculty member of UCSD's Urban Studies and Planning Program.

RWBC university partners include UCSD and SDSC/UCSD along with San Diego State University, as well as Mexican partners [COLEF](#), el Colegio de la Frontera Norte; [CICESE](#), Centro de Investigación Científica y de Educación Superior de Ensenada; and [UABC](#), Universidad Autónoma de Baja California. In addition, there is a wide range of partners from nonprofit organizations and government agencies to industry partners, with a complete partner list available [here](#). The RWBC is funded by the [UCSD Superfund Basic Research Program](#) through the National Institute of Environmental Health Sciences ([NIEHS](#)), and the Expo is being funded principally by this program.

Expo Schedule and Demos

The May 29 Expo will include an opening plenary, four information and visualization technology demonstrations, other discussions, and a closing session followed by a reception. The opening plenary will include comments by Dr. William Suk, Director, Superfund Basic Research Program, National Institute of Environmental Health Sciences.

Following lunch, a session on "Enabling Collaboration in Science and Regional Planning" will include Dr. Robert Tukey, principal investigator of UCSD's Superfund Basic Research Program, and Professor Steve Erie, director of UCSD's [Urban Studies and Planning Program](#).

Throughout the day, partners will present four technology and project demonstrations. Each demo will be repeated four times, so that everyone will be able to attend all demos. Due to space limitations in the demos, participants are requested to register online, ranking the demos in order of interest. Three demos will be on the main UCSD campus in the vicinity of the Institute of the Americas, and one demo will be at the SIO Visualization Center, with shuttle transportation provided.

Demo One: *"3-D Regional Canvas for the Californias"*

This demo will showcase the state-of-the-art 3-D visualization technologies being developed and tested in partnership research projects as part of a long-term effort to create a "Transborder City-Region Visualization Theatre" and to make cutting edge 3-D-interactive tools directly available to academic, community, industry, and governmental organizations via the Web.

Demo Two: *"Online Interactive Mapping of Superfund Toxicants and Quality of Life Indicators"*

This presentation will demo RWBC online interactive mapping technology that allows for easy visual integration of data from multiple Internet information sources. It will link watershed-specific Superfund toxicants data from many sources, with San Diego County Quality of Life indicators and cross-border

demographic and health information being developed at Telesis Corporation, with water pollution data collected by the BayKeeper non-profit group.

Demo Three: *"Regional Planning Chronologies: Taking the Long Look at Equity through the Official, Invisible, and Visionary Planning Histories of San Diego"*

This demonstration showcases the use of information technology to provide integrated views of regional planning history, juxtaposing and interrelating official city plans, federal policies, and alternative planning visions. It illustrates how the analytical use of digital historical content can shed new light on today's patterns of urban and regional development.

Demo Four: *"Regional Workbench Consortium (RWBC): Overview of Mission, Projects, Partners and Precepts"*

This demo will provide an overview of the RWBC, and will include a tour of the RWBC's website, covering the tools, data base structure, and multimedia communications components.

With funding support through UCSD's Superfund Basic Research Program, SDSC researchers Richard Marciano, director of the [DAKS Sustainable Archives & Library Technologies \(SALT\) Lab](#), and Ilya Zaslavsky, director of the DAKS [Spatial Information Systems Lab](#), are integrating leading-edge knowledge-based and spatial information systems technologies into a federated network of tools and information in the RWBC website. Zaslavsky is integrating interactive mapping technologies (demo #2) and Marciano is applying historical information science in this regional planning setting (demo #3). SDSC education specialist Jason Wiskerchen is developing advanced Web-based educational technologies and robust outreach capabilities in the integrated RWBC website. --[Paul Tooby](#)

Useful links

- More information on the RWBC Expo is at <http://www.regionalworkbench.org/html/expo2003.php>
- RWBC Expo registration -- http://www.regionalworkbench.org/html/expo_registration.php
- Main RWBC website -- <http://www.regionalworkbench.org/>
- Superfund Basic Research Program -- <http://www-apps.niehs.nih.gov/sbrp/index.cfm>
- UC San Diego Superfund Basic Research Program, Outreach Core -- <http://superfund.ucsd.edu/outreach/index.html>
- UCSD-TV documentary on the RWBC -- <http://www.ucsd.tv/schedule.asp?Date=5/19/03>
- RWBC initiative to integrate GIS and 3-D visualization in a "regional canvas" -- <http://regionalworkbench.org/html/3dmodels.htm>
- RWBC "Watershed Planning Support System" -- <http://regionalworkbench.org/html/projects/watermain.htm>
- RWBC pedagogy, service learning, and workforce development -- <http://usp.ucsd.edu/~kpezzoli/sequence/186/RWBCRelations.htm>
- Multimedia interactive narratives on RWBC -- <http://www.regionalworkbench.org/html/narratives.html>
- Global network of planning schools and regional associations -- http://www.regionalworkbench.org/html/wr_planning.htm